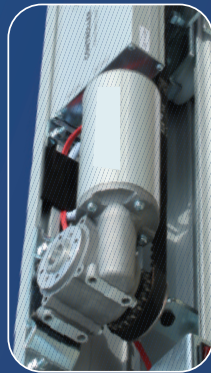


# Sliding Auto-door BEN-250



## ACCESSORIES



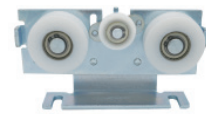
250 Controller



250 Motor



250 Idle Pulley



250 Hangers



250 Power Cable



250 Belt Bracket



250 Cable holder



250 Floor Guide



250 Remote Control



250 Stopper



Belt



Microwave Sensor

## TECHNICAL DATA

Door form: single door / double door  
 Loading weight:  $\leq 1 \times 250\text{kg} / \leq 2 \times 200\text{kg}$   
 Clean opening width: 1000-2800mm/1800-3800mm  
 Power supply: AC 110~220V $\pm 10\%$ , 50/60Hz  
 Power consumption: <100W  
 Opening speed: 200-460mm/S (adjustable)  
 Closing speed: 200-460mm/S (adjustable)  
 Open time: 1-9S (adjustable)  
 Closed force F: >100N  
 Manual force: <100N  
 Humidity range: -20 ~ +50°C

## FEATURES

Intelligent control system, various parameters can be flexibly adjusted by manual or remote control according to the selected controller. Low-noise power unit, motor, worm gear and reducer integrated.

It adopts modern design, applies high-power brushless motor and new mechanical components that are trusted by the world. The hanging parts are made of imported high-strength nylon, and the load capacity of the unit reaches 2×200Kg.

The electric lock function is safe and reliable.

The control unit can be connected with building fire center, when fire, the door can be hold open or hold closed for safety.

It is suitable for all kinds of large-channel, industrial workshops, etc. It runs smoothly, is easy to install and easy to maintain.

## SECTIONAL VIEW

